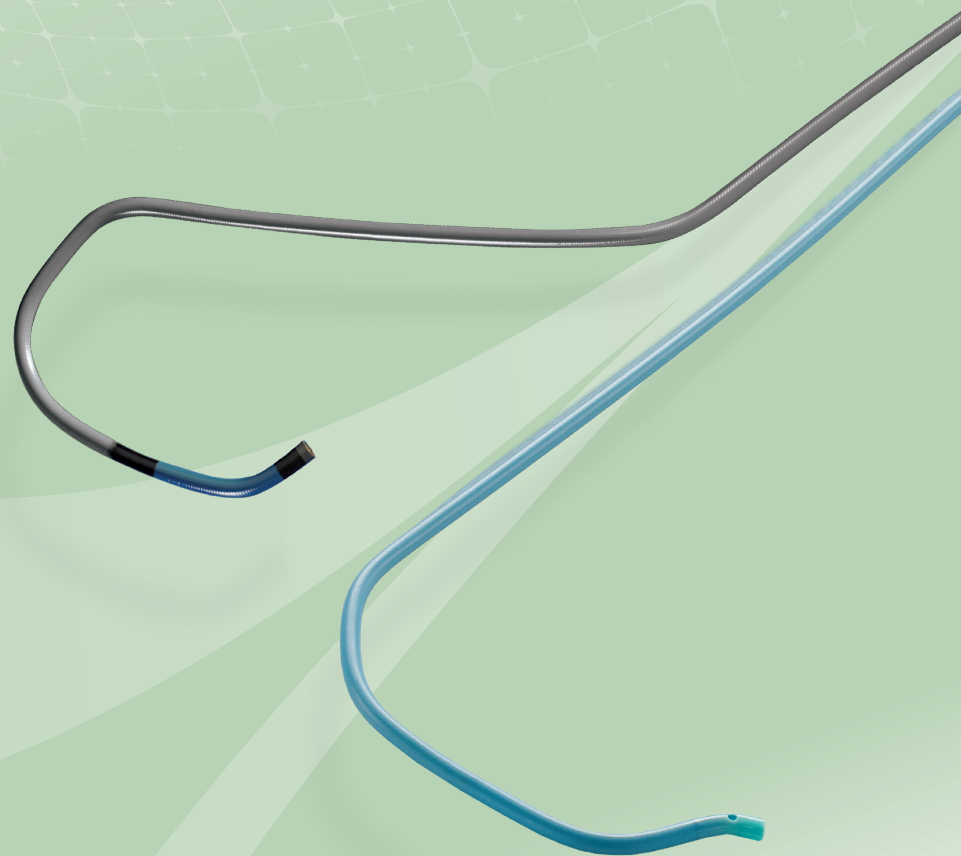


***Optitorque***<sup>®</sup>

Coronary Diagnostic Catheters

***Heartrail***<sup>®</sup>

Coronary Guiding Catheter



**OPTIMAL  
PERFORMANCE**  
WITH THE RIGHT  
CATHETER

**TERUMO**  
INTERVENTIONAL  
SYSTEMS

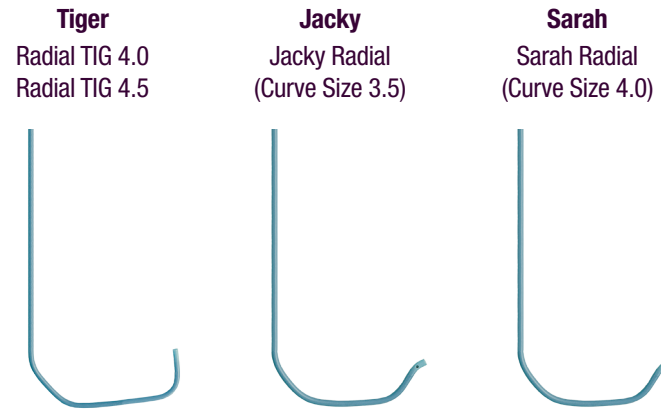
This catheter guide is a comprehensive tool to assist you in selecting the optimal catheter curve shape for various procedural and anatomical situations. The illustrations of the various radial-specific shaped curves show how these catheters are designed to appear and function when in use.

Please note this reference tool is intended to illustrate typical options in catheter shape selection and should not be considered a definitive guide. Physician preference may vary from the recommendations in this tool.

## Optitorque®

Coronary Diagnostic Catheters

A line of coronary diagnostic catheters designed to obtain optimum torque control and precise placement. These universal and radial-specific shapes are designed to help simplify catheterization procedures for physicians.<sup>1</sup>

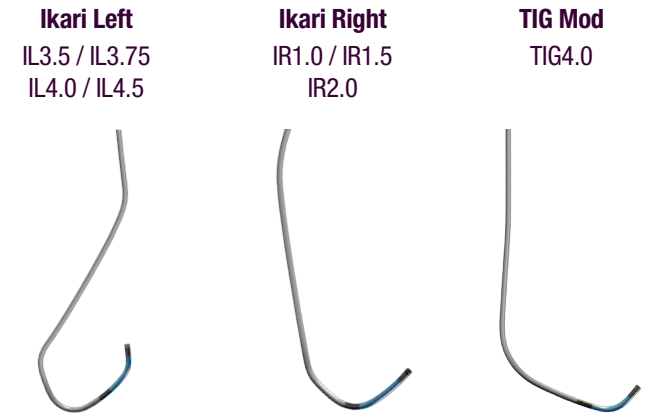


Anatomical Situation	Catheter Tip Shape
Small aortic root or narrow aorta when engaging LCA or RCA	Tiger
Dilated, long, or large aortic root when engaging LCA or RCA	Tiger 4.5 or Sarah
SVG	Tiger
LIMA access	Tiger
Engage RCA	Jacky
Increased visibility around the ostium	Jacky
LV Gram	Jacky
Superior takeoff in the LCA	Tiger

## Heartrail®

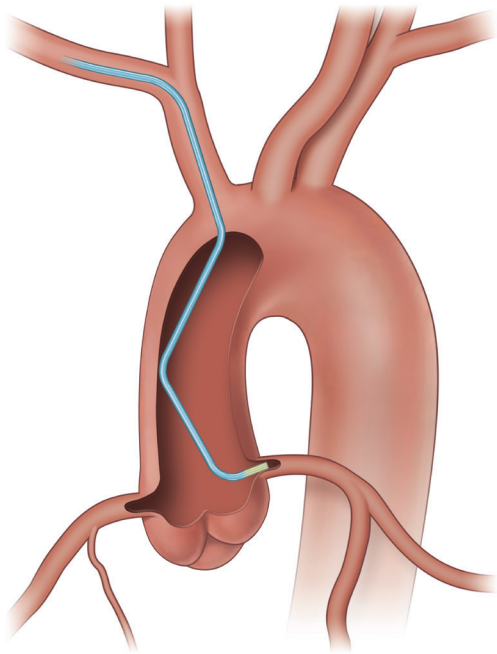
Coronary Guiding Catheter

A line of radial-specific guiding catheters designed to provide back-up support and trackability in tortuous vessels, featuring universal shape options designed to simplify procedures.<sup>2</sup>



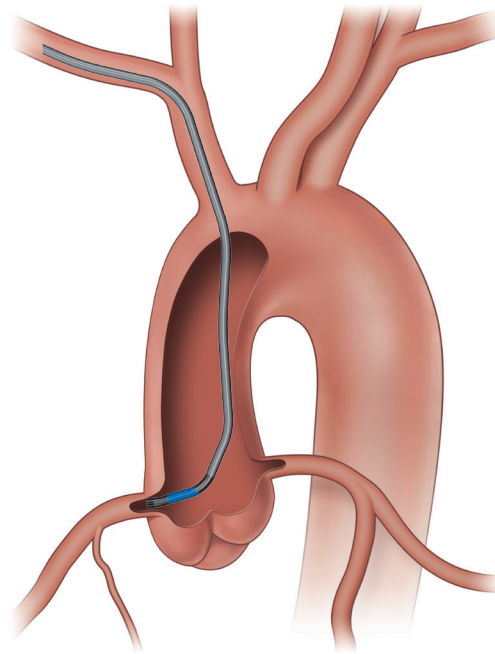
Anatomical Situation	Catheter Tip Shape
Small aortic root when engaging RCA	Ikari Right 1.0 or 1.5
Small aortic root when engaging LCA	Ikari Left 3.5
Dilated, long, or large aortic root when engaging RCA	Ikari Right 2.0
Dilated, long, or large aortic root when engaging LCA	Ikari Left 4.0 or 4.5
SVG	TIG Mod
Ostial plaque in the RCA	Ikari Right 1.0 or 1.5
Ostial plaque in the LM	Ikari Left 3.5
Mid-to-distal lesion in the LCA	Ikari Left 3.5 or 3.75
STEMI occlusion of the RCA	TIG Mod
STEMI occlusion of the LCA	Ikari Left 3.5 or 3.75

## Small aortic root or narrow aorta



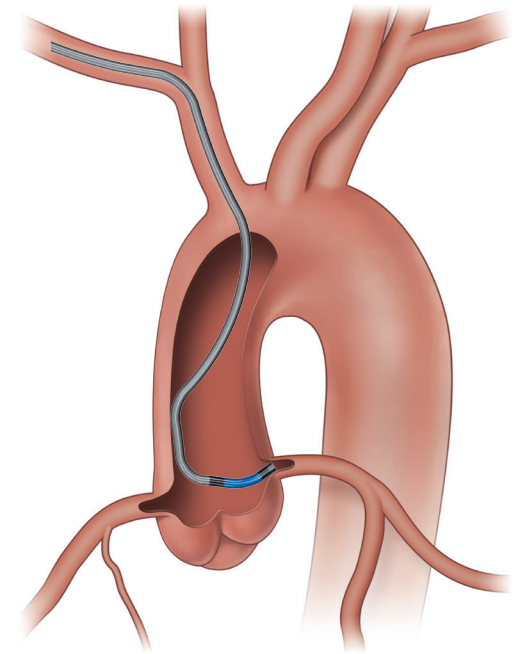
OPTITORQUE

Tiger



HEARTRAIL

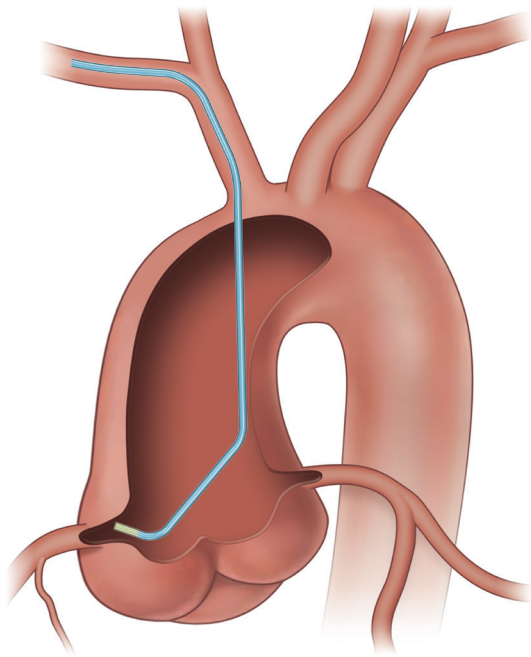
Ikari Right 1.0 or 1.5



HEARTRAIL

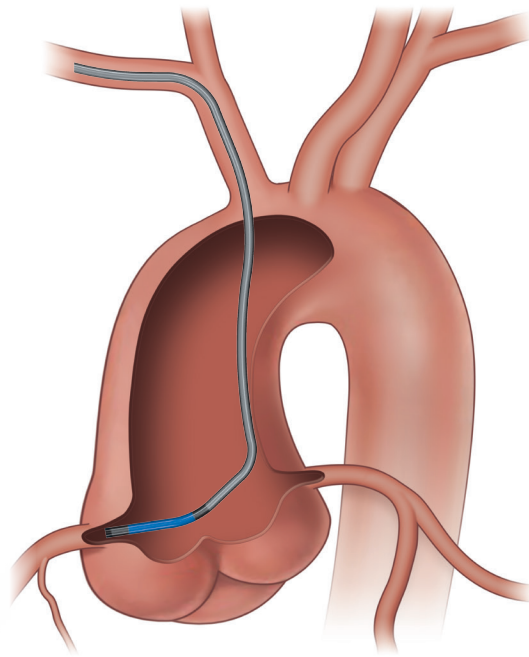
Ikari Left 3.5

## Dilated, long, or large aortic root



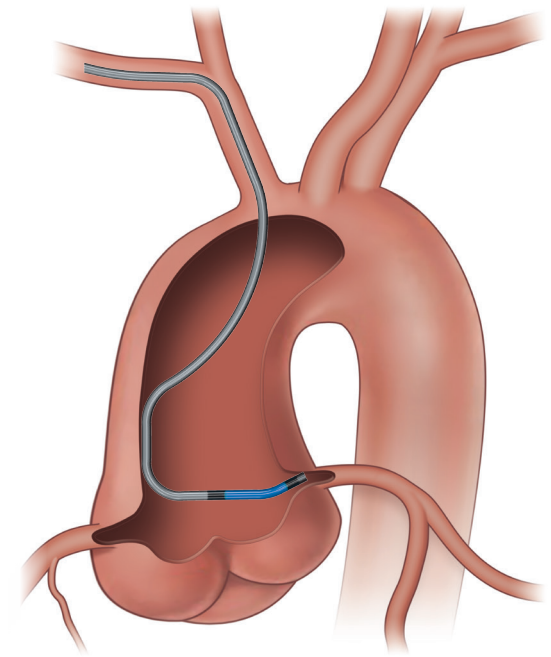
OPTITORQUE

Tiger 4.5



HEARTRAIL

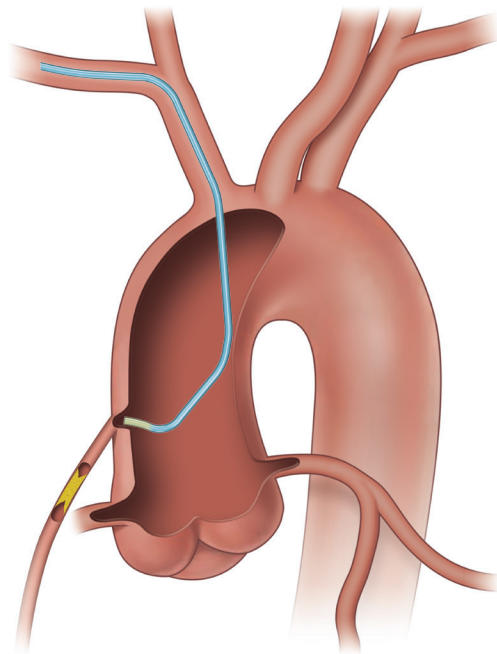
Ikari Right 2.0



HEARTRAIL

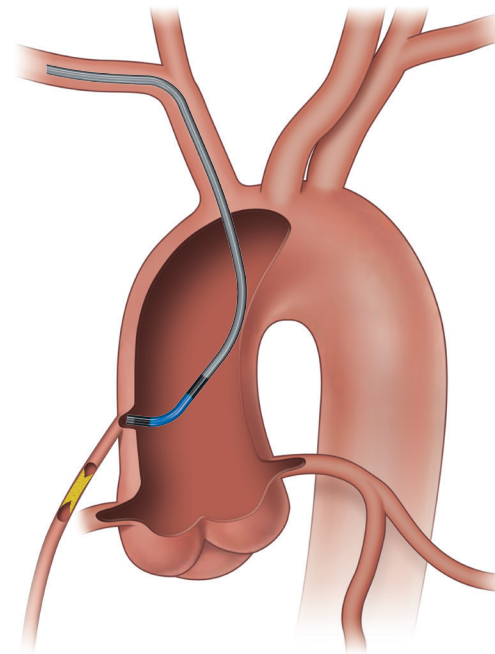
Ikari Left 4.0 or 4.5

# Saphenous vein graft



OPTITORQUE

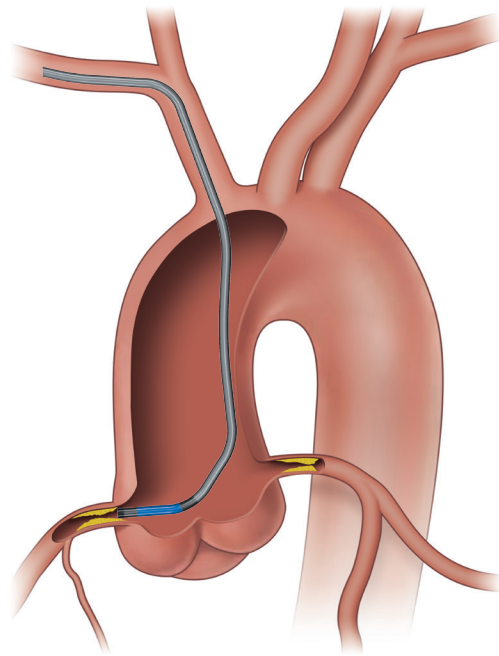
Tiger



HEARTRAIL

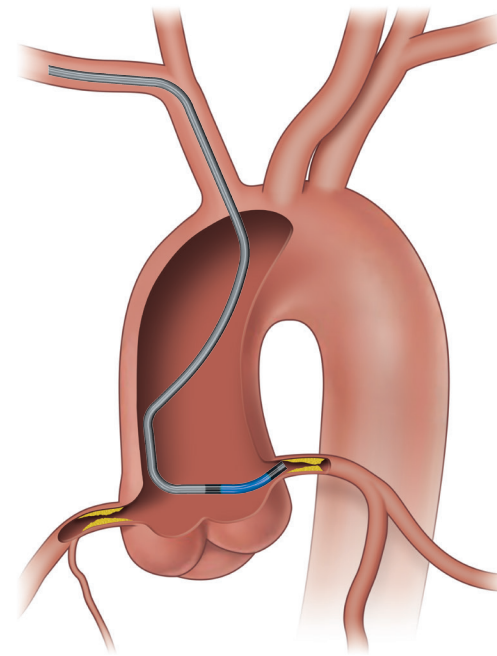
TIG Mod

# Ostial plaque



HEARTRAIL

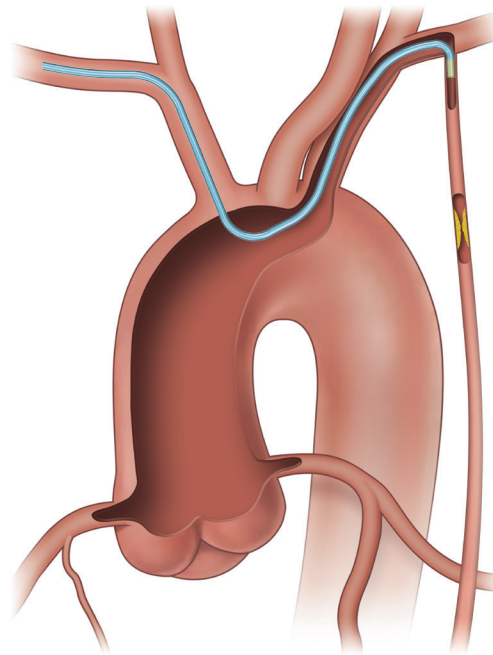
**Ikari Right 1.0 or 1.5**



HEARTRAIL

**Ikari Left 3.5**

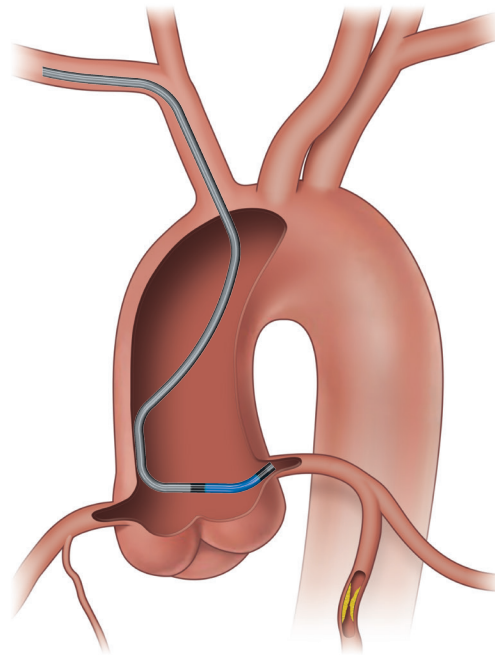
# LIMA access



OPTITORQUE

Tiger

## Mid-to-distal lesion in the LCA

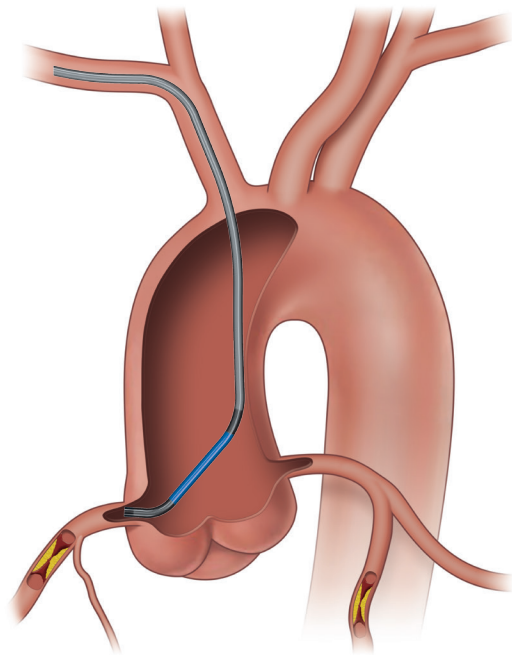


HEARTRAIL

Ikari Left 3.5 or 3.75

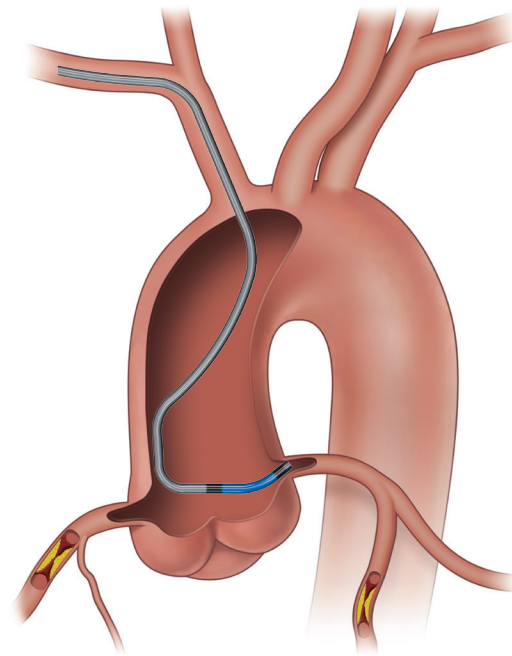


# STEMI occlusion



HEARTRAIL

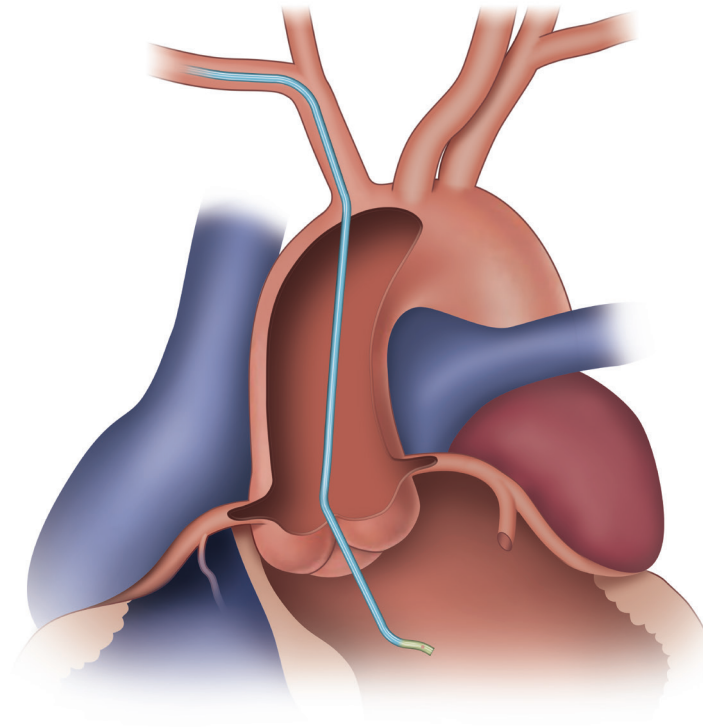
TIG Mod



HEARTRAIL

Ikari Left 3.5 or 3.75

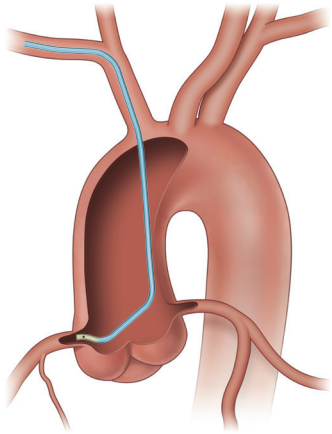
# Left ventriculogram



OPTITORQUE

Jacky

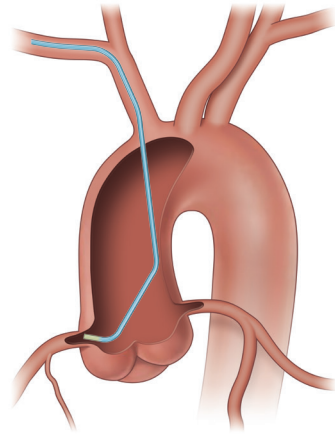
# Normal anatomy - Right coronary artery



OPTITORQUE

**Jacky**

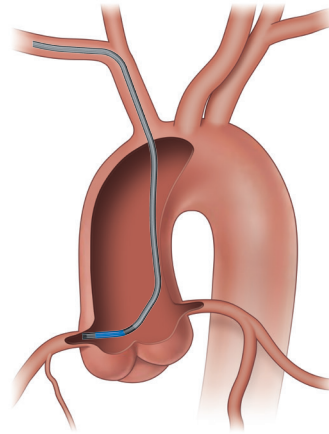
(Universal Engagement)



OPTITORQUE

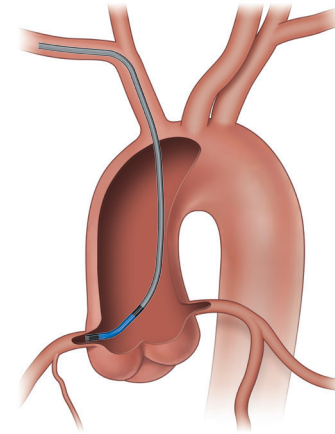
**Tiger**

(Universal Engagement)



HEARTRAIL

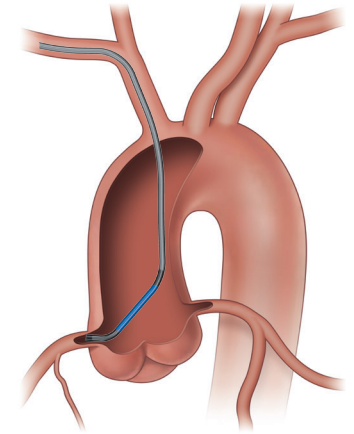
**Ikari Right**



HEARTRAIL

**Ikari Left**

(Universal Engagement)

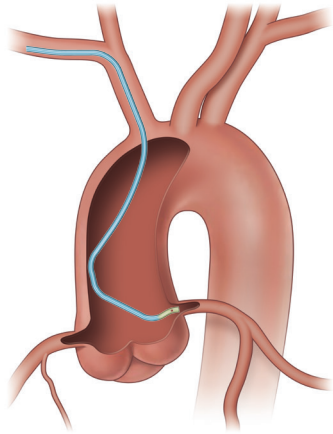


HEARTRAIL

**TIG Mod**

(Universal Engagement)

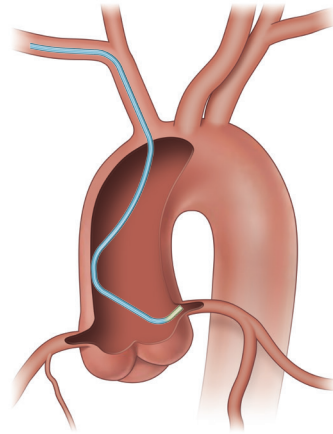
## Normal anatomy - Left coronary artery



OPTITORQUE

**Jacky**

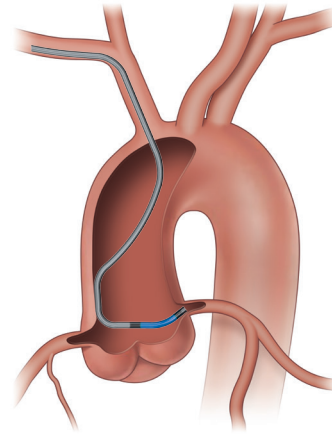
(Universal Engagement)



OPTITORQUE

**Tiger**

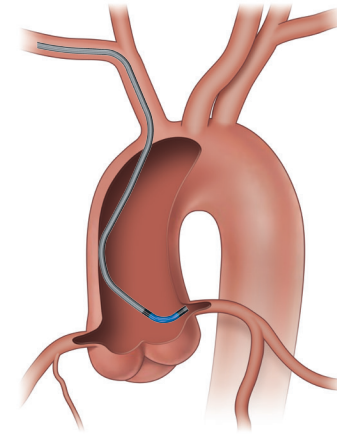
(Universal Engagement)



HEARTRAIL

**Ikari Left**

(Universal Engagement)



HEARTRAIL

**TIG Mod**

(Universal Engagement)

# Optitorque®

Coronary Diagnostic Catheters

## ORDERING INFORMATION

TIGER				
SHAPE NAME	PRODUCT CODE	SIZE	LENGTH (CM)	SIDE HOLES
Radial TIG 4.0	40-5011	5Fr	100	1
	40-5013	5Fr	110	1
Radial TIG 4.5	40-5012	5Fr	100	1
	40-5014	5Fr	110	1
Radial TIG 4.0	40-6011	6Fr	100	1
	40-6013	6Fr	110	1
Radial TIG 4.5	40-6012	6Fr	100	1
	40-6014	6Fr	110	1

JACKY				
SHAPE NAME	PRODUCT CODE	SIZE	LENGTH (CM)	SIDE HOLES
Jacky Radial (Curve Size 3.5)	40-5021	5Fr	100	2
	40-5023	5Fr	110	2
	40-6021	6Fr	100	2
	40-6023	6Fr	110	2

SARAH				
SHAPE NAME	PRODUCT CODE	SIZE	LENGTH (CM)	SIDE HOLES
Sarah Radial (Curve Size 4.0)	40-5022	5Fr	100	2
	40-5024	5Fr	110	2
	40-6022	6Fr	100	2
	40-6024	6Fr	110	2

# Heartrail®

Coronary Guiding Catheter

## ORDERING INFORMATION

IKARI LEFT				
SHAPE NAME	PRODUCT CODE	SIZE	LENGTH (CM)	SIDE HOLES
IL3.5	40-5370	5Fr	100	0
	40-6370	6Fr	100	0
	40-6371	6Fr	100	2
IL3.75	40-5372	5Fr	100	0
	40-6372	6Fr	100	0
	40-6377	6Fr	100	2
IL4.0	40-5373	5Fr	100	0
	40-6373	6Fr	100	0
	40-6374	6Fr	100	2
IL4.5	40-5375	5Fr	100	0
	40-6375	6Fr	100	0
	40-6376	6Fr	100	2

Note: Maximum pressure 700psi.

IKARI RIGHT				
SHAPE NAME	PRODUCT CODE	SIZE	LENGTH (CM)	SIDE HOLES
IR1.0	40-5380	5Fr	100	0
	40-6380	6Fr	100	0
	40-6383	6Fr	100	2
IR1.5	40-5381	5Fr	100	0
	40-6381	6Fr	100	0
	40-6384	6Fr	100	2
IR2.0	40-5382	5Fr	100	0
	40-6382	6Fr	100	0
	40-6385	6Fr	100	2

Note: Maximum pressure 700psi.

TIG MOD				
SHAPE NAME	PRODUCT CODE	SIZE	LENGTH (CM)	SIDE HOLES
TIG4.0	40-5311	5Fr	100	0
	40-6311	6Fr	100	0

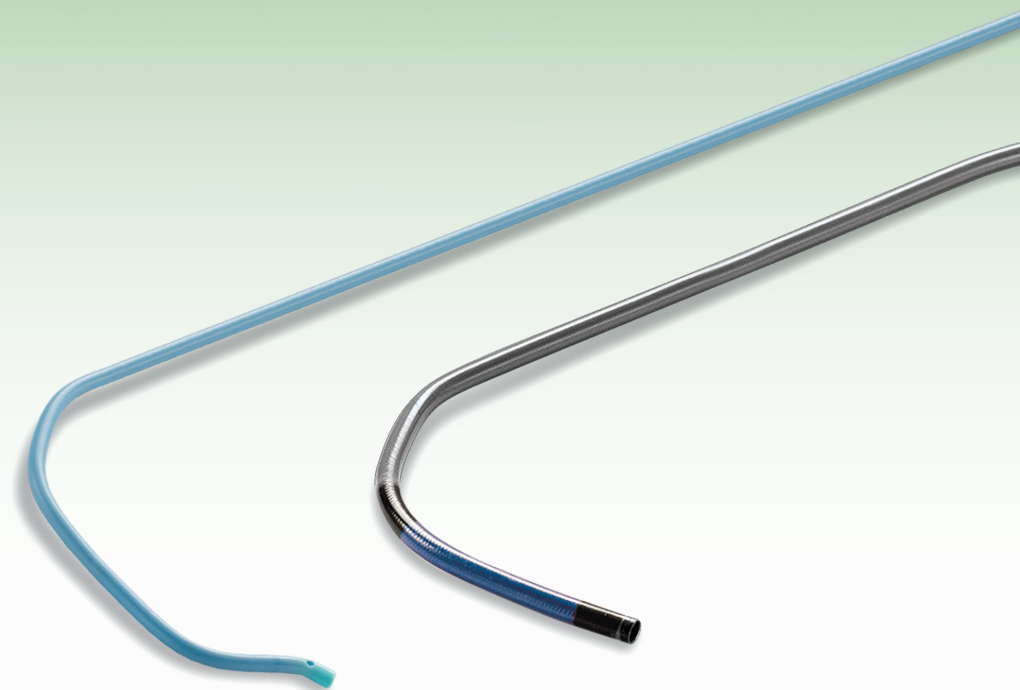
Note: Maximum pressure 700psi.



# Optitorque®

Coronary Diagnostic Catheters

# Heartrail®

Coronary Guiding Catheter



**FIND OUT MORE**  Phone: 833.883.7866  [terumocanada.ca](http://terumocanada.ca)

Please note this reference tool is intended to illustrate typical options in catheter shape selection and should not be considered a definitive guide. Physician preference may vary from the recommendations in this tool.

**References:**

1. Ikari Y. Commentary by MG Cohen. Long-term experience using the Ikari guide catheter for radial PCI. *Cath Lab Digest*. 2013;21(9). [www.cathlabdigest.com/articles/Long-Term-Experience-Using-Ikari-Guide-Catheter-Radial-PCI](http://www.cathlabdigest.com/articles/Long-Term-Experience-Using-Ikari-Guide-Catheter-Radial-PCI). Accessed March 18, 2016.
2. Ikari Y, Nagaoka M, Kim JY, Morino Y, Tanabe T. The physics of guiding catheters for the left coronary artery in transfemoral and transradial interventions. *J Invasive Cardiology*. 2005;17(12):636-641.

**RX ONLY.** The advertisement is directed to physicians only, and not to consumers. Refer to product labels and packaging insert for complete warnings, precautions, potential complications, and instructions for use. Products may not have regulatory approval in all countries. Please contact your local sales representative if you have questions about the availability of products in your area.

©2022 Terumo Medical Corporation. All rights reserved.

All brand names are trademarks or registered trademarks of their respective owners. PM-05630

 **TERUMO**  
INTERVENTIONAL  
SYSTEMS